



RE/MAX

PROPERTY HUB



17 Violet Drive, Newton Abbot, TQ12 1GX

Asking price £230,000

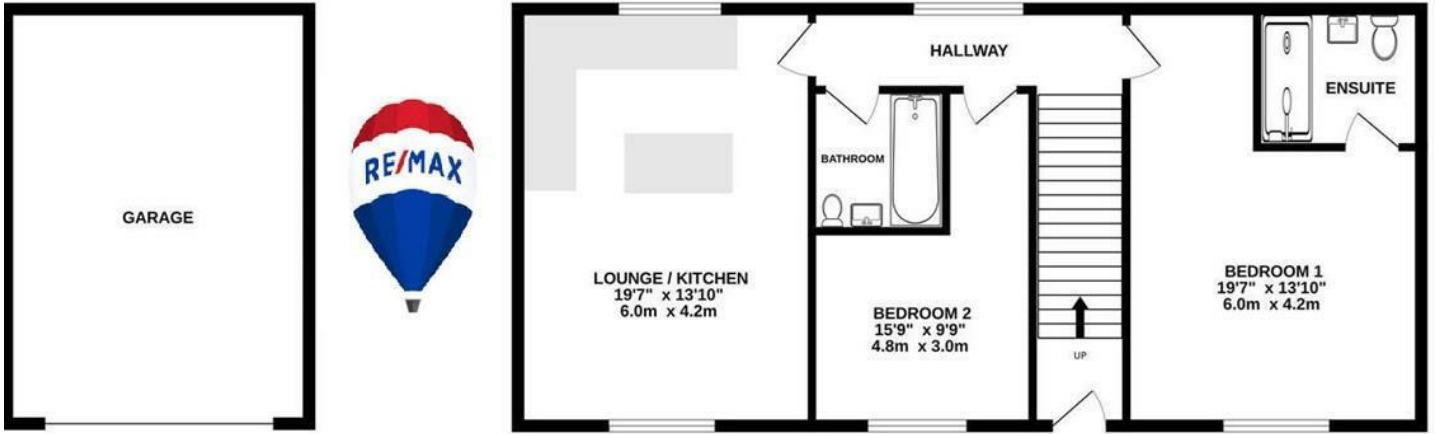
RE/MAX are delighted to present this well-appointed detached coach house to the market. Offering generous and thoughtfully designed accommodation, the property boasts a spacious open-plan living and kitchen area, ideal for both everyday living and entertaining guests. There are two well-proportioned double bedrooms, including a principal bedroom with en-suite facilities, alongside a modern family bathroom. The home further benefits from a private garage and driveway parking.

Accommodation

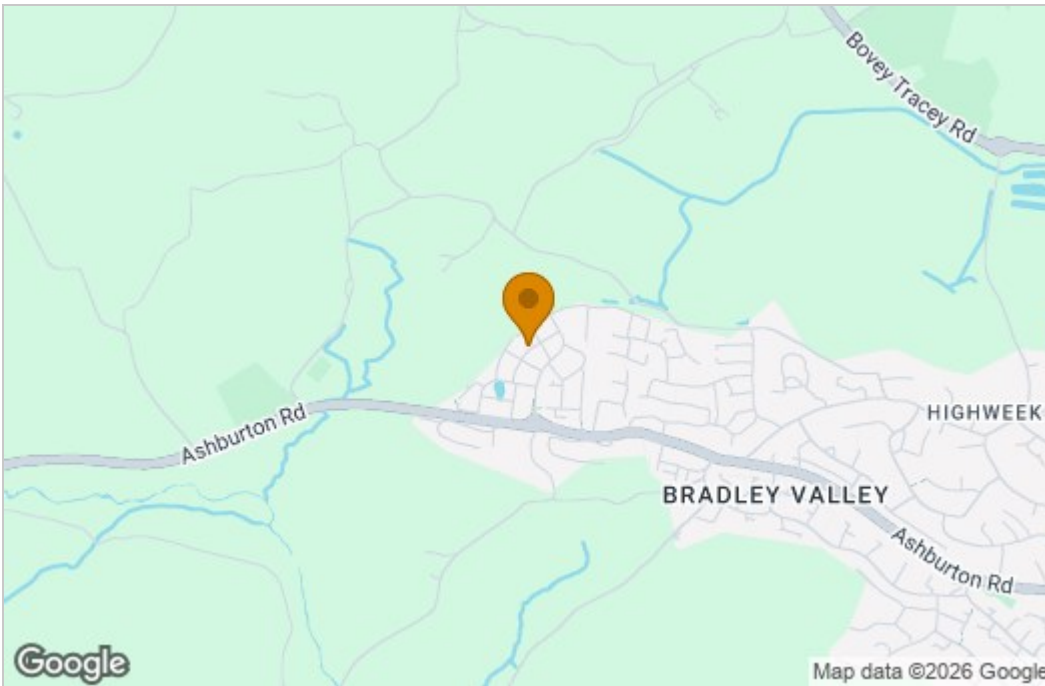
The property is accessed via a welcoming entrance hall, providing access to all main rooms. The bright and airy open-plan lounge and kitchen is enhanced by large double-glazed windows that allow natural light to fill the space. The kitchen is both stylish and functional, featuring a central island, stainless steel electric oven, and designated space for a fridge/freezer.

The contemporary family bathroom is finished with clean, modern fittings. The impressive principal bedroom spans the full length of the property and benefits from a private en-suite shower room complete with a double shower and skylight, creating a light-filled yet private retreat. The second double bedroom offers flexible accommodation, ideal as a guest room, home office, or additional living space.

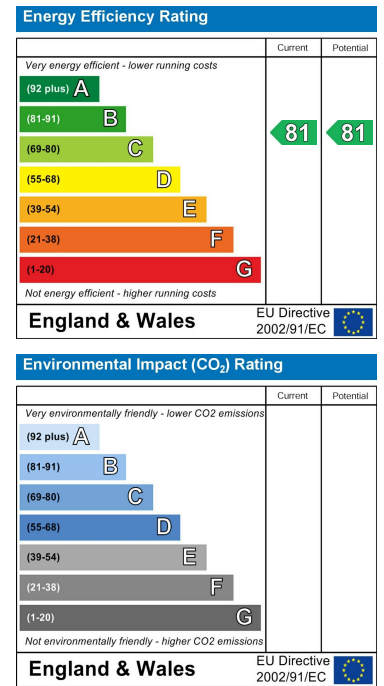
Floor Plan



Area Map



Energy Efficiency Graph



These particulars, whilst believed to be accurate are set out as a general outline only for guidance and do not constitute any part of an offer or contract. Intending purchasers should not rely on them as statements of representation of fact, but must satisfy themselves by inspection or otherwise as to their accuracy. No person in this firm's employment has the authority to make or give any representation or warranty in respect of the property.